

Customer Information Sheet

DRAWING No.: M22-19X00XX

SHEET 1 OF 2

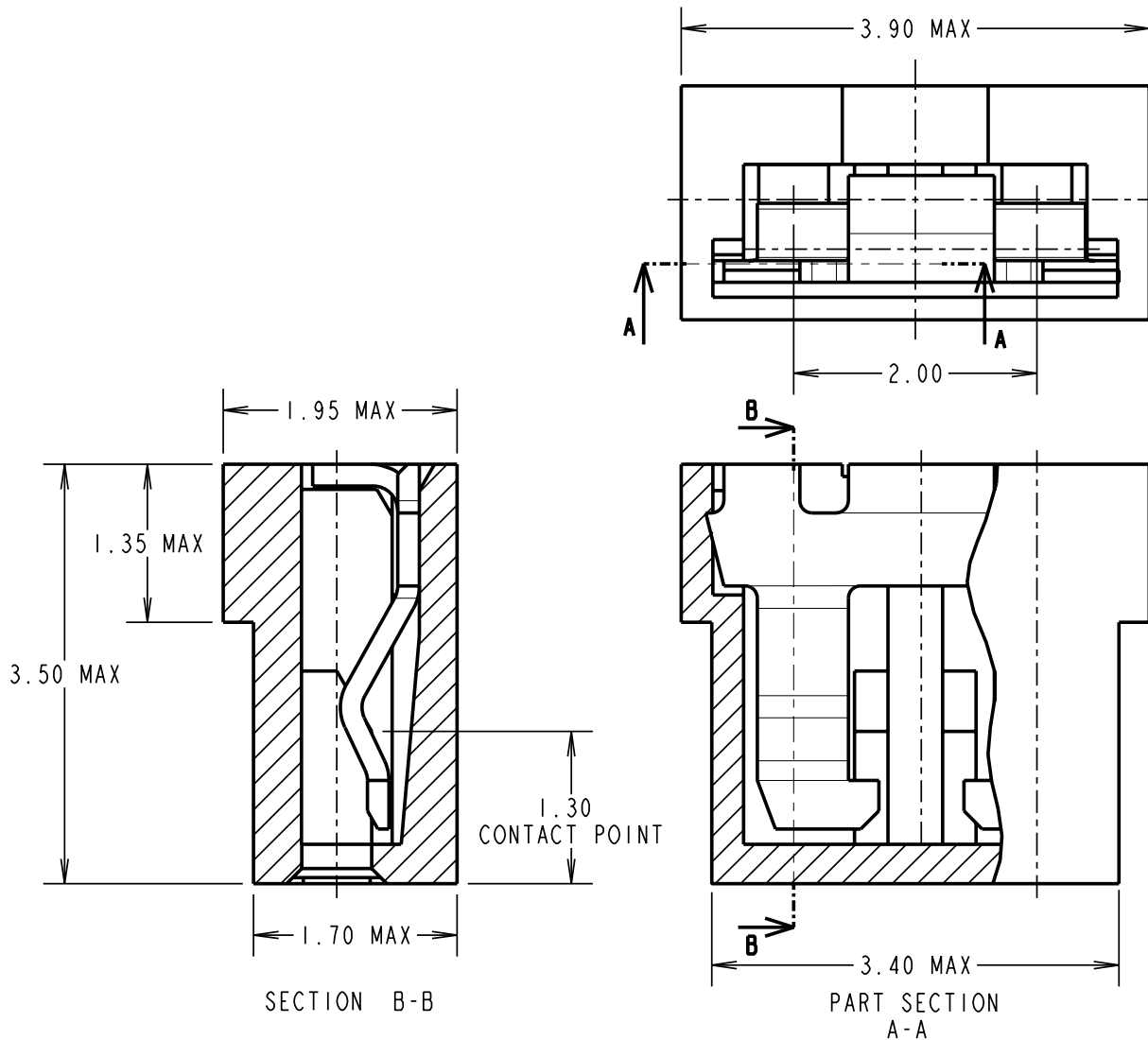
IF IN DOUBT - ASK

(C)

NOT TO SCALE

THIRD ANGLE PROJECTION

ALL DIMENSIONS IN mm



SPECIFICATIONS:
MATERIALS:
 MOULDING = GLASS FILLED POLYESTER UL94V-0
 CONTACT = BERYLLIUM COPPER
FINISH:
 CONTACT:
 05 = 0.13µ GOLD ON CONTACT FACE OVER NICKEL
 46 = 3µ 100% TIN OVER NICKEL
 MOULDING COLOUR = SEE ORDER CODE
ELECTRICAL:
 CURRENT RATING AT 25°C = 2A MAX
 WORKING VOLTAGE = 250V AC/DC
 VOLTAGE PROOF = 500V AC/DC @ 50Hz
 CONTACT RESISTANCE (MAXIMUM):
 TIN/LEAD = 20MILLOHMS INITIAL
 25 MILLIOHMS AFTER CONDITIONING
 GOLD = 15 MILLIOHMS INITIAL
 20 MILLIOHMS AFTER CONDITIONING
 INSULATION RESISTANCE (MINIMUM):
 INITIAL = 1000 MEGOHMS
 AFTER CONDITIONING = 1000 MEGAOHMS
ENVIRONMENTAL:
 TEMPERATURE RANGE = -40°C TO +85°C
MECHANICAL:
DURABILITY:
 TIN/LEAD = 50 OPERATIONS
 GOLD = 300 OPERATIONS
 INSERTION FORCE = 10N MAX
 WITHDRAWAL FORCE = IN MIN
 FOR COMPLETE SPECIFICATION, SEE COMPONENT SPECIFICATION C013XX (LATEST ISSUE)

ORDER CODE:
M22-19X00XX

MOULDING COLOUR
 0 = BLACK
 1 = BLUE
 2 = RED
 3 = LIGHT GREY

CONTACT FINISH
 05 = GOLD
 46 = 100% TIN

RA	5	08.10.08	10154
NAME	ISS.	DATE	C/NOTE
APPROVED:		R. ADDE	
CHECKED:		M.G. PLESTED	
DRAWN:		W. J. BOURNE	
CUSTOMER REF.:			
ASSEMBLY DRG:			

HARWIN

HARWIN USA TEL: 603 893 5376 FAX: 603 893 5396 mis@harwin.com	HARWIN Europe (UK) TEL: 023 9231 4545 FAX: 023 9231 4590 mis@harwin.co.uk	HARWIN Asia TEL: +65 6 779 4909 FAX: +65 6 779 3868 mis@harwin.com.sg
--	--	--

THIS DRAWING AND ANY INFORMATION OR DESCRIPTIVE MATTER SET OUT HEREON ARE CONFIDENTIAL AND COPYRIGHT PROPERTY OF THE HARWIN GROUP AND MUST NOT BE DISCLOSED, LOANED, COPIED OR USED FOR MANUFACTURING, TENDERING OR FOR ANY OTHER PURPOSE WITHOUT THEIR WRITTEN PERMISSION.

TOLERANCES
 X. = ±1mm
 X.X = ±0.25mm
 X.XX = ±0.10mm
 X.XXX = ±0.01mm
 ANGLES = ±5°
 UNLESS STATED

MATERIAL:

FINISH:

S/AREA: mm²

TITLE:
 2mm PITCH JUMPER SOCKET ASSEMBLY (OPEN TOP)

DRAWING NUMBER:
M22-19X00XX

SHT 1 OF 2